



# Fitrix ERP for Small & Medium Size Electronics Manufacturers

## Fitrix At a Glance

### Fitrix ERP Modules

#### Manufacturing

Bill of Material  
Standard Routing  
Production Order Processing  
Labor Processing  
Production Scheduling  
Master Scheduling  
Material Requirements Planning  
Capacity Requirements Planning  
Product Configurator  
Standard Costing  
Actual Costing

#### Distribution/Supply Chain

Inventory Control  
Inventory Replenishment  
Order Entry  
Purchasing  
Customer Relationship Management

#### Accounting

General Ledger  
Accounts Payable  
Accounts Receivable  
Payroll  
Fixed Assets  
Multi-Currency

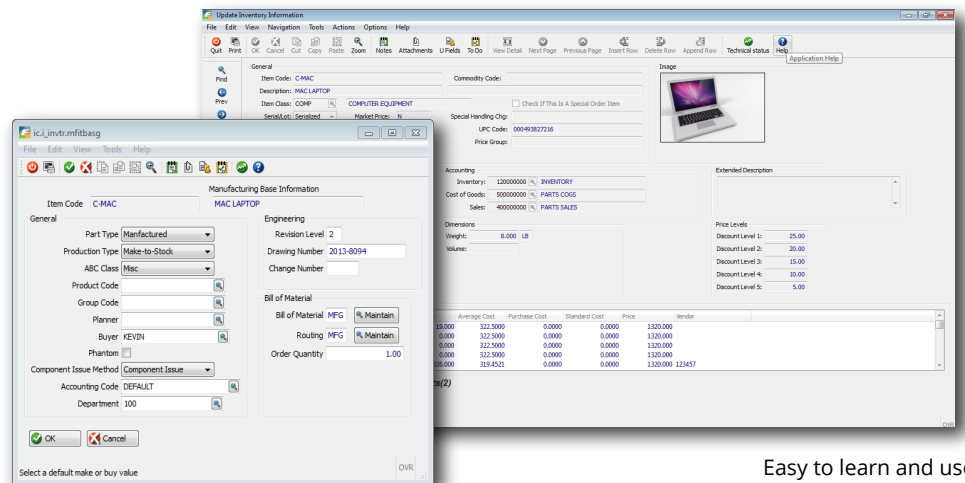
### Key Features

Unlimited Multi-level Bill of Materials  
Serial/Lot Number Tracking at all component levels  
Traceability & Recall Management  
Warranty Tracking  
Make-To-Order and Make-To-Stock Support  
Robust and easy-to-use Product Configurator  
Available to Promise and Advanced Planning  
Full Compliance Support for Regulatory & Industry Standards  
Quality Management

### Supported Manufacturing Modes

Make to Order | Make to Stock | Engineer to Order | Job Shop | Mixed Mode

### Fitrix User Interface



Easy to learn and use  
Supports high volume and high speed data entry  
Quick and easy access to your company information

### Comprehensive Inventory Management

*"Fitrix allowed us to cut down on our inventory...  
it probably cut it in half."*

John Maydonovitch, CEO  
MCE, Inc.

### Additional Features

Approved Vendor Lists  
Contract/Outsourced Manufacturing  
Customer Credit Management  
Document Management  
Forecasting/Planning/MRP  
Kitting Support  
Mixed Mode Manufacturing including  
MTO, MTS, Engineer To Order, Job Shop  
Blanket Sales Orders and Purchase Orders  
Bar Code support  
RMA processing  
Contract Manufacturing Supplier  
Contract Manufacturing Consumer



## Technology Stack

### Client

Windows PC | FitriX Windows Thin Client | Browser

### Mobile

*\* devices must be browser-equipped and connected to the Internet*

Any mobile device

Any bar-code scanner or scanning-enabled mobile device

### Server

*Fitrix is typically delivered as a fully installed and configurable virtual environment for any of these servers:*

Windows Server

Linux Server

VMWare ESXI Server

Hosted/Cloud

Native O/S: Linux

Database: IBM Informix IDS (SQL, ODBC compliant)

Application Software: FitriX RAD Tool | Four J's Genero

## Fitrix ERP Pricing

### Software Pricing Base License: \$16,000

5 concurrent users

Fitrix Windows Thin Client software (unlimited clients)

Database

All 10 base modules

Any 5 manufacturing modules

### Additional Software Licenses:

Additional concurrent *full* user: \$1,500 each

Additional concurrent *limited* user: \$750 each

### 15 User Pricing Example With Services:

For a **15 concurrent user** premised based system with average implementation services, all base modules, and up to **5 manufacturing modules**, the total up-front cost for a one time license fee and all implementation services would be around **\$75,000 + \$645/month** for software support. The same system on a **60 month lease** (including services) would be **\$3,000 down + \$2,148/month** (lease + support). After **60 months** this would reduce to **\$645/month**.

*All services are optional, billed hourly, and fitted to your exact requirements. Costs vary depending on premise, hosted or cloud, one time or monthly licenses, leasing, amount of services required, number of manufacturing modules needed, number of concurrent users and more. Please contact us for a complete price quotation for your desired configuration.*



### Fourth Generation Software Solutions Corp.

100 Galleria Parkway

Suite 1020

Atlanta, GA 30339

Toll Free: 800.374.6157

Local: 770.432.7623

Rev. 201310c

info@fitrix.com | www.fitrix.com | © Fourth Generation Software Solutions Corp.

## Fitrix Rapid 90 Day Implementation Program

*\* assumes out-of-box features; add 30 days for limited customizations*

Go LIVE on FitriX in 90 days!

Greatly reduces the risk of stalled implementations and scope creep.

Detailed readiness plans ensure a smooth cutover.

Users can stay current with software after being trained once.

### A Competitive Advantage

*"The ability to make more accurate pricing decisions gave us a significant competitive advantage. It all ties back to the quality of our data and the flexibility FitriX provides in how to store and retrieve it in a way that's useable and fits our needs."*

Robert Taylor, CEO,  
Wireless USA

### Extending FitriX

Fitrix is designed as a ready-to-go, out-of-the-box solution.

But if you have unique requirements, FitriX can be extended to meet them.

### Planned FitriX Feature Releases and Updates:

We continually add new features to FitriX.

### Fitrix Feature Program:

This program allows us to add unplanned product features.

### Customizing FitriX:

Fitrix' source code can be fully customized to address your unique requirements, and your software will remain fully supportable.

### High Quality Support

*"Fitrix is a great product at a great price. The level and quality of service and support they provide are second to none."*

Rick Shutter, VP of Finance,  
Veridian

## Fitrix Support & Services

*In addition to our Help Desk and Product Update support package, we offer these a-la-carte services:*

Detailed needs analysis

Implementation project management

Implementation assistance

Data conversion assistance

Training

Software installation & configuration

On-Site Go Live assistance

Custom software feature design, development, implementation