
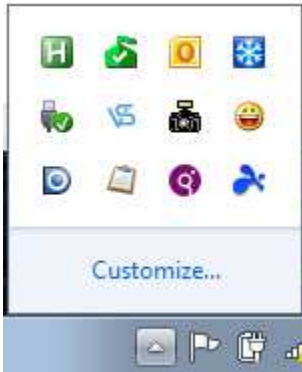



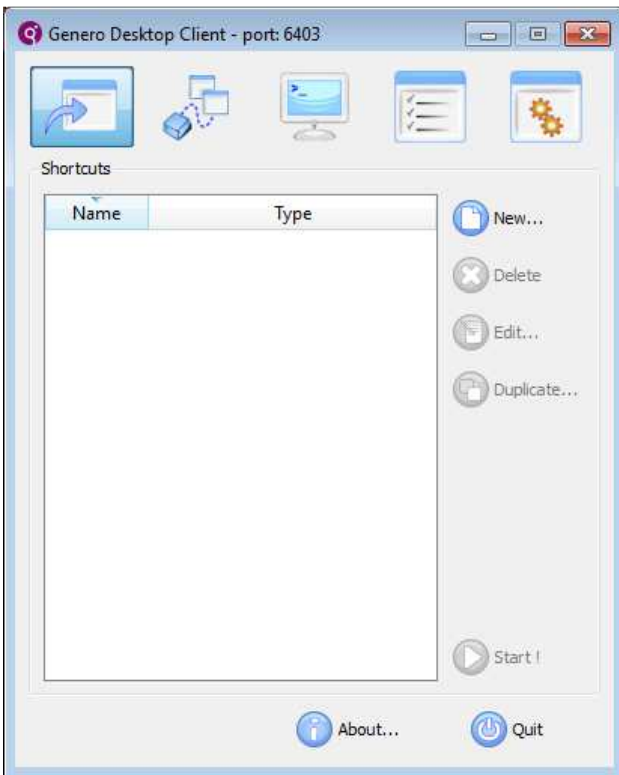
# Windows 7 Slow Performance Issue

**Programs are slow to launch.**

Find the GDC icon:  in the system tray (the area in the lower right of the screen next to the Date/Time):



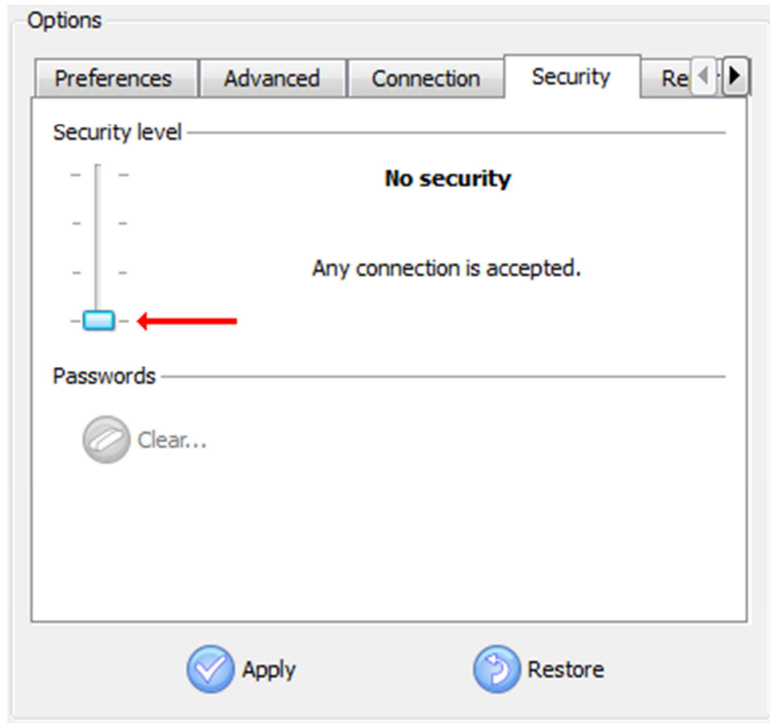
You may have to left click the  arrow in the system tray to "Show hidden icons". Left click the GDC icon and you will see:





Now left click on the options icon and then the "Security tab":

Slide the "Security level" control to the bottom:



**Click:** **!**

**Exit the dialog box by clicking the in the upper right corner.**

**Do NOT click because this will bring down the GDC.**